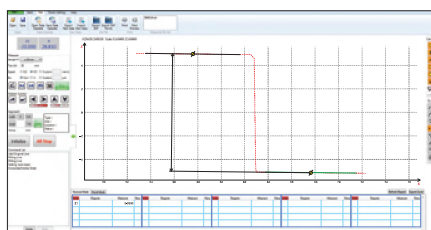


# SURFACE PROFILE MEASURING MACHINE

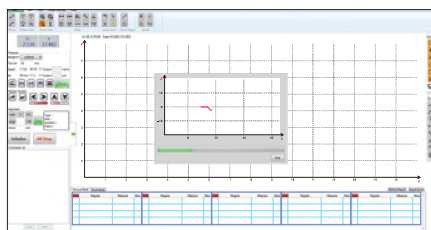
## CODE SPM-1000



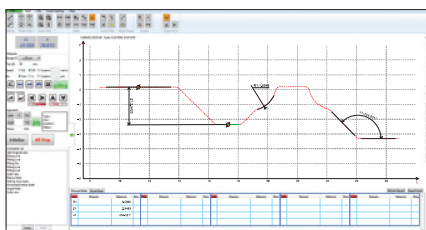
- Software is included, for surface profile measurement and data output
- Probe compensation
- Output as format txt, csv, etc.
- Large range design, the leverage ratio is 1:2.2, maintain the original accuracy of the sensor
- The overall structure of the Z-axis sensor does not have any elastic components, ensuring the measuring force is constant regardless the position of probe



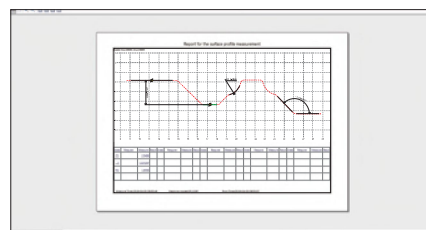
calibration



contour scanning



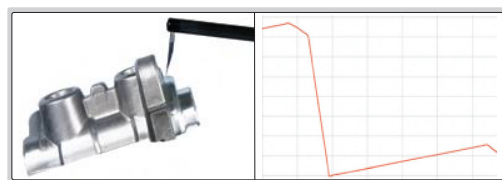
dimension measurement



data output

### SPECIFICATION

X axis measuring range	140mm
X axis resolution	0.1μm
X axis straightness	0.5μm/100mm
X axis moving speed	0.1~10mm/s
Z axis measuring range	±20mm
Z axis resolution	0.05μm
Z axis moving speed	0.5~10mm/s
Linear accuracy	±(1.5+ 0.05H )μm, H is measuring height in mm
Angular measuring accuracy	±2'
Arc measuring accuracy	±(2+R/8)μm, R is 2~10mm standard ball
Radius of probe tip	25μm
Moving direction	backward
Measuring force	6.9~9.8mN
Measuring unit	mm/inch
Traceable angle	72° (upward), 87° (downward)
Drive mode	motor
Travel of Z axis	430mm
Dimension (L×W×H)	1200×700×1780mm
Power supply	220±5%V, 50Hz
Net weight	320kg



standard balls (included)



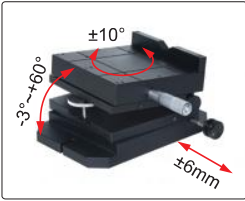
standard blocks (included)



standard shaft (included)

STANDARD DELIVERY

Main unit	1 pc
Standard probe and arm	1 pc of each
Standard block	2 pcs
Standard ball	2 pcs
Standard shaft	1 pc
Stage	1 pc
Vise	1 pc
Computer	1 pc
Measurement software	1 pc
Printer	1 pc
Installation tools	1 set



stage (included)



vise (included)

OPTIONAL ACCESSORY

Tilting frame	SPM-1000-TILTING
Probe	see details

SPECIFICATION OF PROFILE PROBES

Unit: mm

<p>chisel stylus</p> <p>code <b>SPM-1000-T01</b> (H=32mm, included) code <b>SPM-1000-T02</b> (H=48mm, optional) code <b>SPM-1000-T03</b> (H=68mm, optional)</p>	<p>cone stylus</p> <p>code <b>SPM-1000-Z01</b> (H=32mm, optional) code <b>SPM-1000-Z02</b> (H=48mm, optional) code <b>SPM-1000-Z03</b> (H=68mm, optional)</p>	<p>ball stylus</p> <p>code <b>SPM-1000-R01</b> (H=32mm, optional) code <b>SPM-1000-R02</b> (H=48mm, optional) code <b>SPM-1000-R03</b> (H=68mm, optional)</p>
<p>standard arm, code <b>SPM-1000-SP</b> (included), stylus is not included</p>	<p>probe for small holes, code <b>SPM-1000-SBP</b> (optional), stylus is included</p> <p>measure the contour of holes with diameter &gt; Ø8mm</p>	
<p>transverse probe, code <b>SPM-1000-LP</b> (optional), stylus is included</p> <p>measure the contour of holes in radial direction</p>		